

WORCESTER ART MUSEUM

studio **class**
programs
& workshops



Wild Art

Featured Illustrated Book

Maurice Sendak's

Where the Wild Things Are

ISBN:978-0-064-43178-1

WHERE THE WILD THINGS ARE



STORY AND PICTURES BY MAURICE SENDAK

WORCESTER ART MUSEUM

studio **class**
programs
& workshops



Inspiration Works from WAM's Collection



Animal Head,

Remojadas culture, classic period,
300-600 CE, Clay, 1985.101 (bit.ly/WAMAnimalHead)

This animal head was made by an artist almost 2000 years ago, living in what is now Mexico's Veracruz Gulf coast. Can you see the smoothness of the clay and the attention to detail by the artist?

Animal Mask (bonu amwin),

Ivory Coast, Baule, 1800-1962 CE, Wood, 1929.109
(bit.ly/WAMAnimalMask)

This sculpture is a mask made of wood dating from between 1800 and 1962. It seems as though the artists wanted to capture the lively spirit of the animal by designing this mask with wide open eyes and sharp teeth.



Articulated "Jizai" Figurine of a Dragon (tatsu),

attributed to Munekazu, Myochin, Japanese, 1850-1900,
Iron, 2014.610 (bit.ly/WAMDragon)

This sculpture is articulated, which means it can move along its joints! Watch the video lesson to see how smoothly this artwork moves!

Elephant

Antoine-Louis Barye, 1816-1875, French, Bronze, 1941.9
(bit.ly/WAMElephant)

This detailed sculpture captures the same lively energy of the Animal Mask by making it seem as though the elephant is charging forward with its legs running. Like the Animal Head, the artist paid close attention to detail.



WORCESTER ART MUSEUM

studio **class**
programs
& workshops



Wild and Fun Pop-Up Faces

Supplies

- Pencil
- Eraser
- 8.5" x11" Paper - Card stock or construction paper great, copy paper will work.
- Scissors
- Coloring materials

Optional

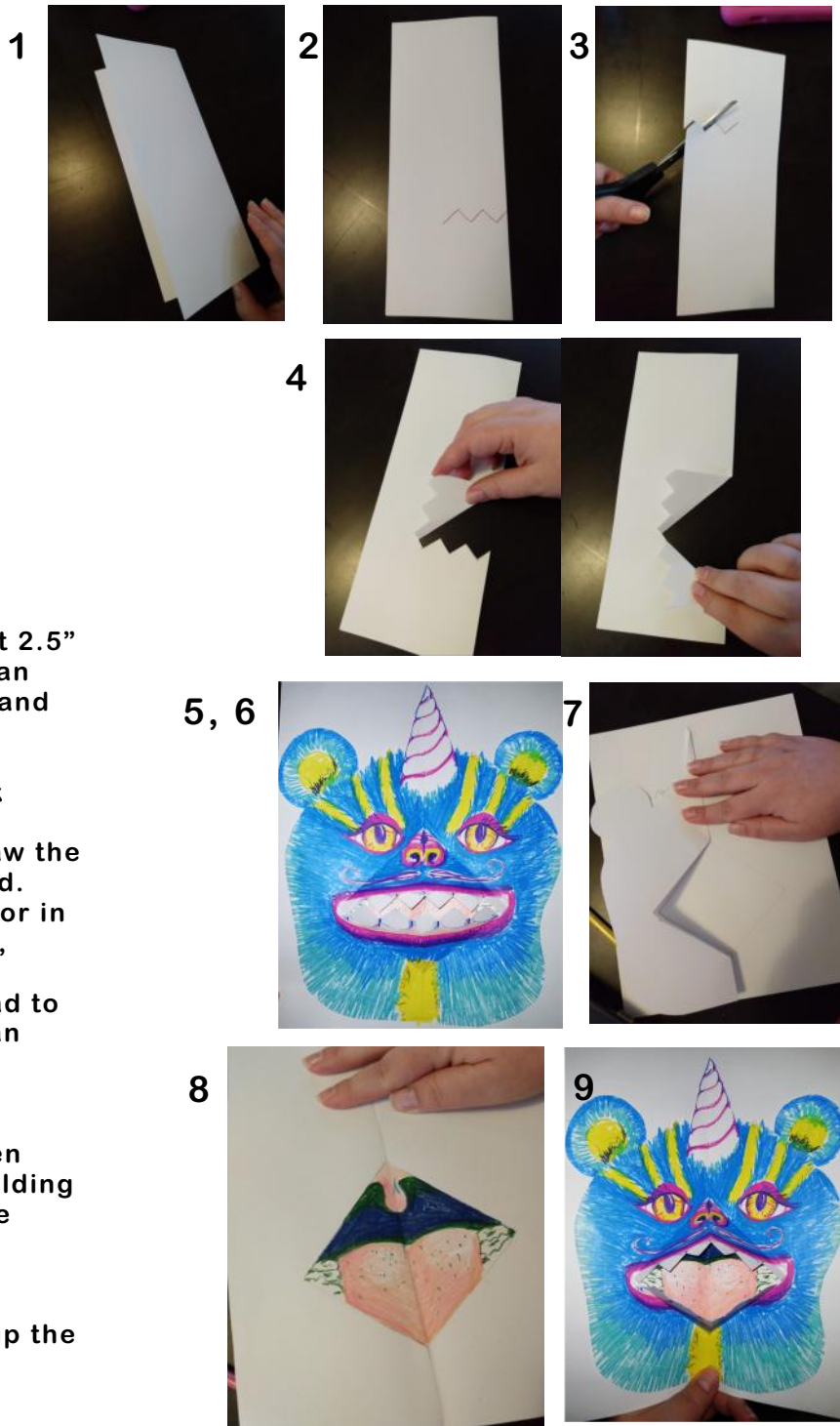
- Another piece of paper
- Glue or tape

Create

1. Fold your paper in half lengthways.
2. Draw a straight line or zig zag about 2.5" long closer to one end of the paper than the other, starting on the folded edge and not going all the way to the other side.
3. Cut the zig zag.
4. Fold the corners of the zig zag back away from the folded edge.
5. Completely unfold the paper and draw the outline of a wild head, cut out the head. The line you cut will be the mouth. Color in the head - don't forget to include eyes, ears, nose, hair, scales, skin, etc.
6. Pop the mouth out and bend the head to make your "Wild Thing" talk! (Video can help explain this part!)

Optional: Add a Mouth

7. Trace the diamond shape of the open mouth on another piece of paper by folding it in half and tracing one side, then the other.
8. Color in the diamond with teeth and tongue.
9. Glue your face to the paper, lining up the mouth opening to the diamond shape.



WORCESTER ART MUSEUM

studio **class**
programs
& workshops



Next-Level Pop-Ups: A Wild Place

Supplies

- 3+ pieces of paper, cardstock and construction paper work great; copy paper will work as well, but won't be as strong.
- Scissors
- Double-sided tape or glue stick
- Colored pencils, markers, or crayons
- Optional: Pop-Up Templates 1 & 2

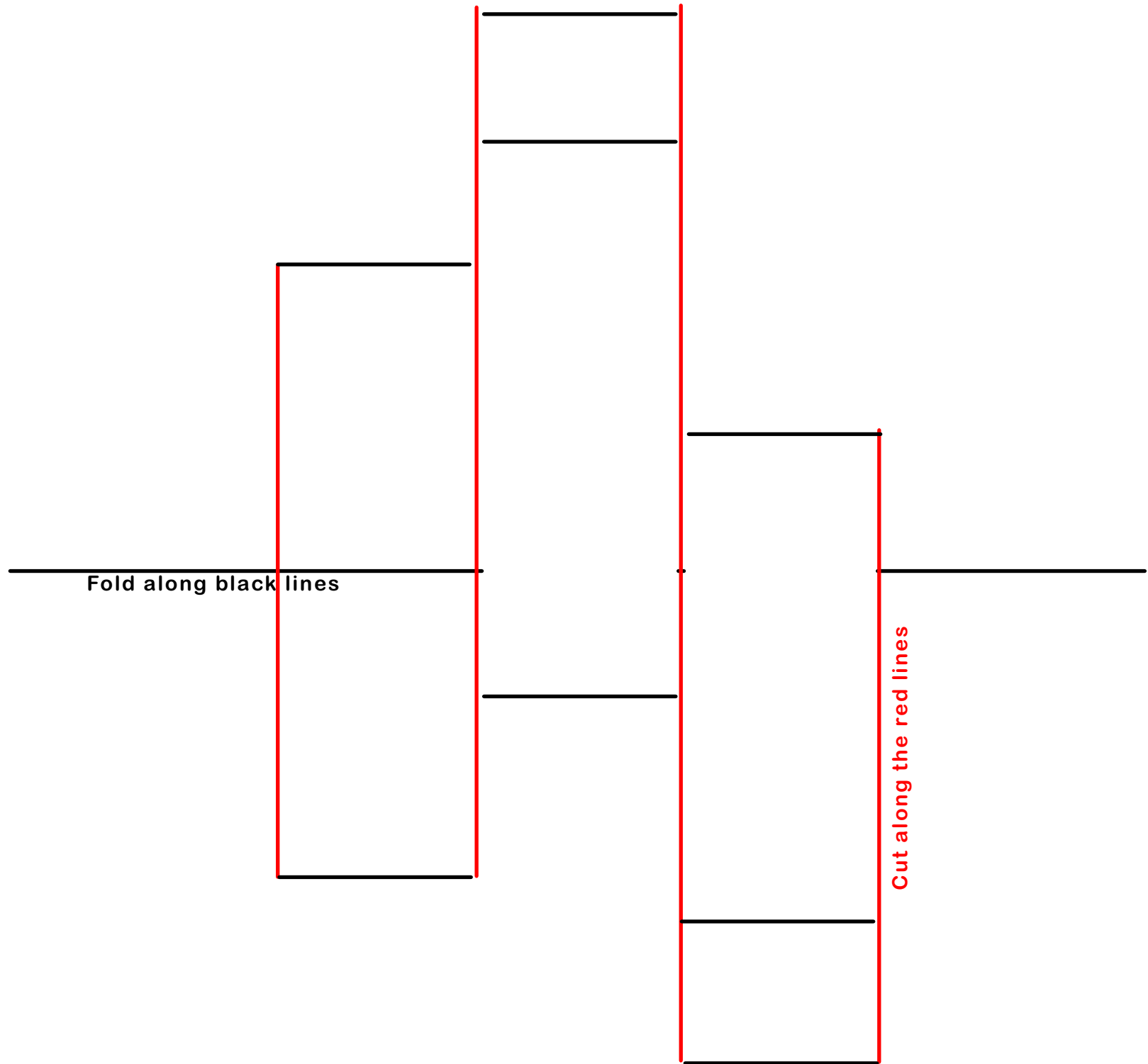


Create

1. Think of a place that you would think of as wild, fun, and exciting, and do a quick sketch of what it might look like - this will be your inspiration for your Wild Place!
2. Fold one sheet of paper in half width-wise.
3. Make four 1" cuts in from the folded side of the paper.
4. Make some of the cuts longer, as shown by the red lines on the template.
5. Fold the resulting strips at the dashes.
6. Fold the piece of paper in half and press each to fold firmly, and put to the side.
7. Using the other piece of paper, fold it in half width-wise as well. If not using the templates, place the other cut and folded piece of paper on top, lining up the center creases, and trace the cut out areas onto the page.
8. Cut the second piece of paper in half along the large fold, and cut out these traced areas, or cut slits to them. This larger piece will be your pop-up background.
9. From the other half of the paper cut a rectangle about 1" x4".
10. From the remaining paper you can cut out your pop up pieces.
11. Test fit these pieces. If you do not want your pop-out to show outside of the folded paper, you may need to make your pop-ups shorter.
12. Draw and color in your pop-out pieces.
13. Finally, assemble them by attaching them with glue or tape to the pop-out base.

WORCESTER ART MUSEUM

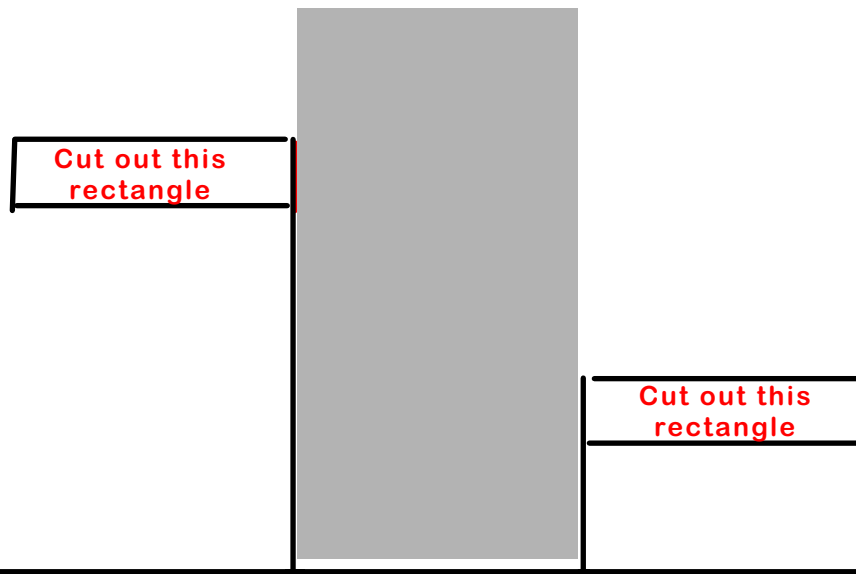
Pop Up Template one (use this side as the back)



WORCESTER ART MUSEUM

Pop Up Template two (use this side as the back)

Fold and cut along the black line, cut out the two small rectangles. This will be your back ground pop-up, cut it out in any shape, but leave the center gray area to attach it with.



Cut out this rectangle

Cut out this rectangle

Cut out this black rectangle and fold on the red lines

The rest of the paper can be used for your other cut-outs.